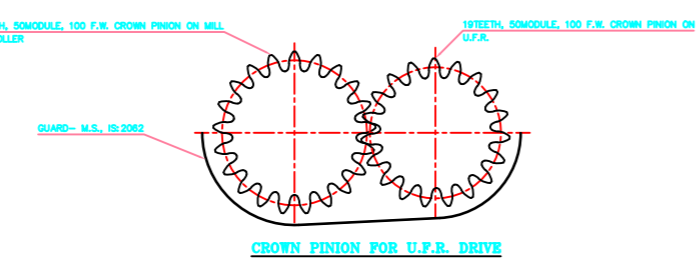
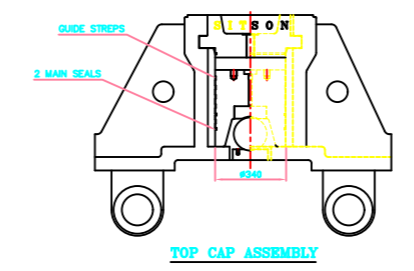
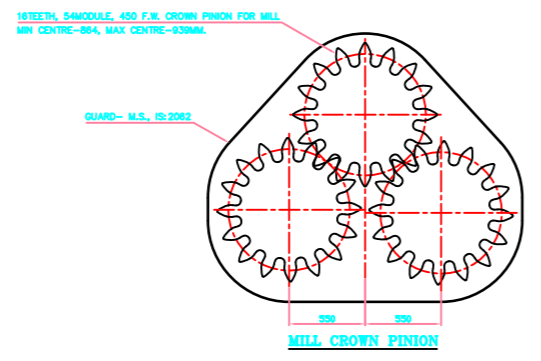
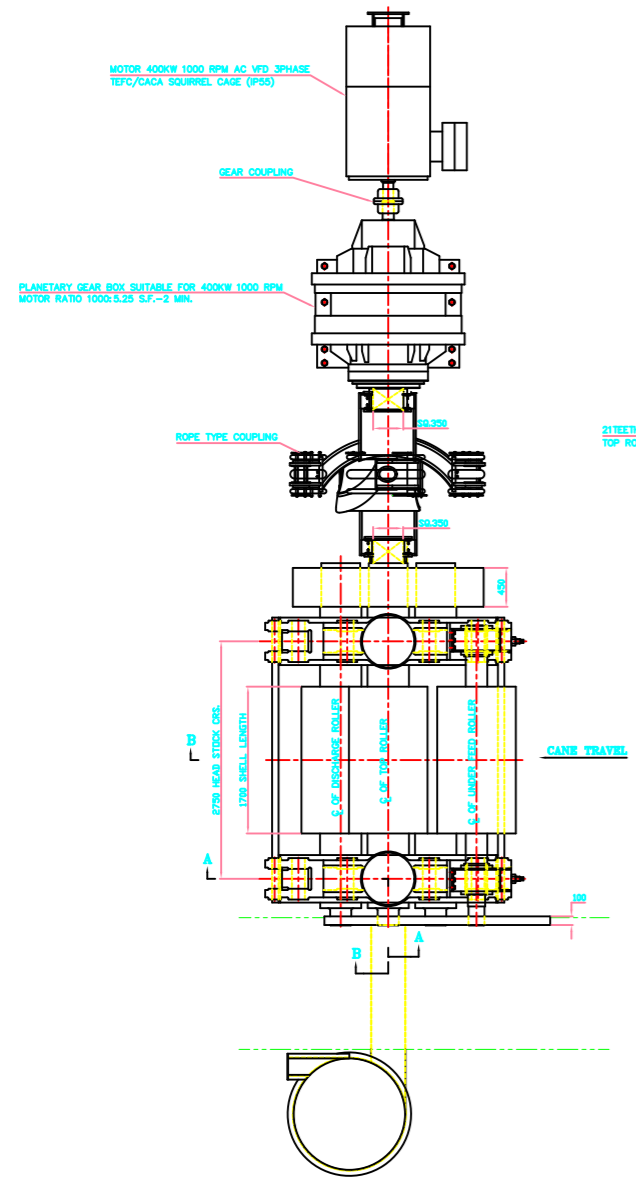
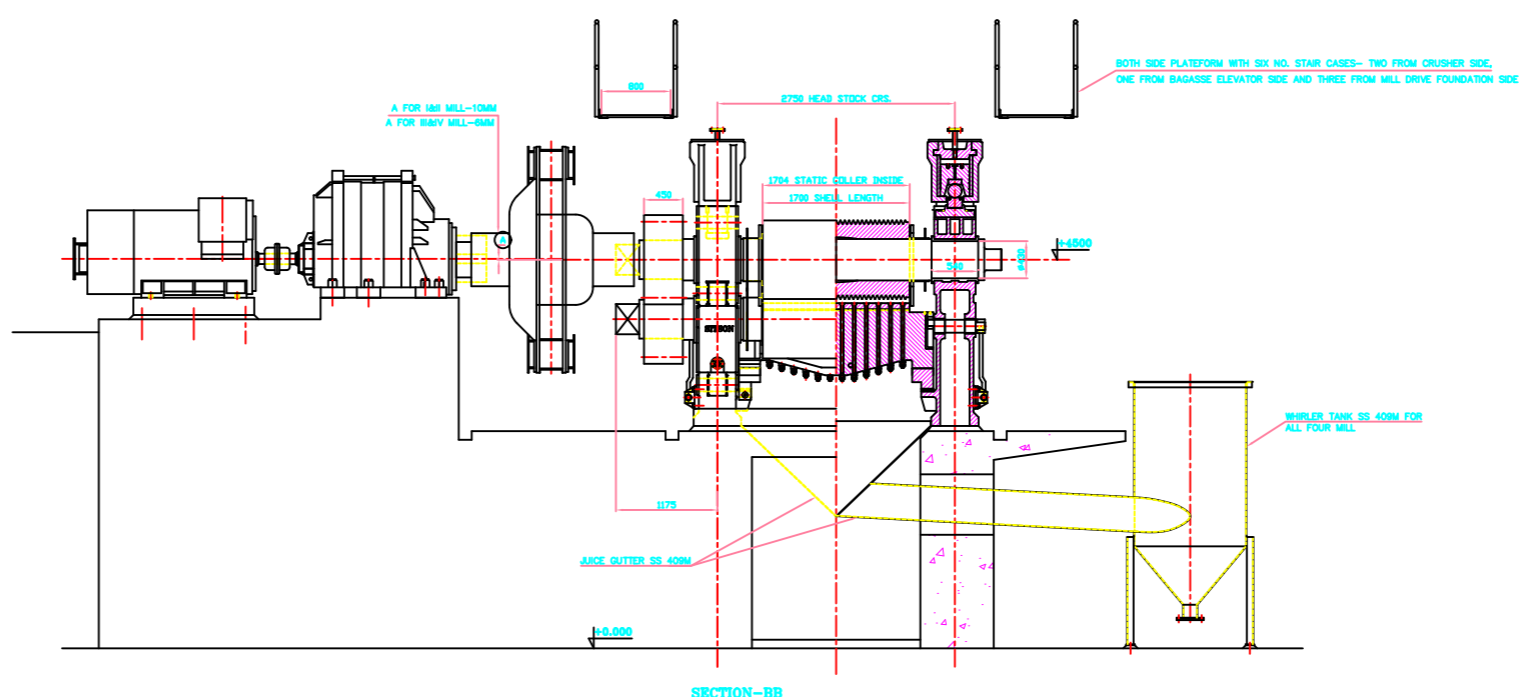
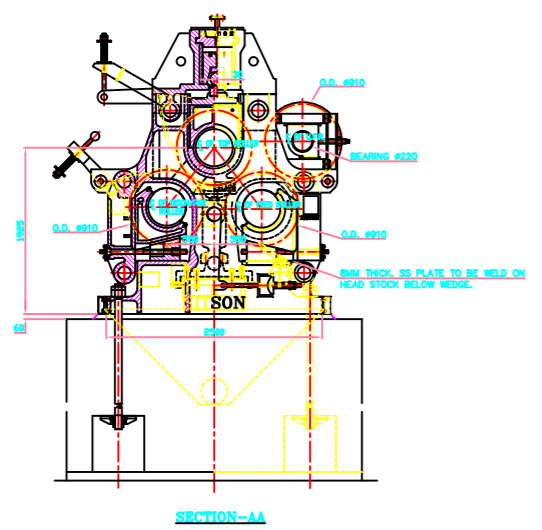


IF IN DOUBT, ASK

DO NOT SCALE



MILL NO.	ROLLER	O.D.	P.C.D.	ROOT #	PITCH	ANGLE	DEPTH	LANDING (TOP)
IVth MILL	U.F.R.	#910	#880	#850	40	50°	30	6MM
	DISCHARGE	#910	#880	#850	40	50°	30	5MM
	FEED	#910	#870	#830	40	40°	40	5MM
IIIrd MILL	U.F.R.	#910	#880	#850	40	50°	30	6MM
	DISCHARGE	#910	#876	#842	40	45°	34	5MM
	FEED	#910	#870	#830	40	40°	40	5MM
IInd MILL	U.F.R.	#910	#870	#830	50	50°	40	6MM
	DISCHARGE	#910	#865	#820	50	45°	45	5MM
	FEED	#910	#858	#806	50	40°	52	5MM
Ist MILL	U.F.R.	#910	#870	#830	50	50°	40	6MM
	DISCHARGE	#910	#865	#820	50	45°	45	5MM
	FEED	#910	#858	#806	50	40°	52	5MM

S.NO.	DESCRIPTION	MATERIAL QUALITY	QTY.
29	MESSCHAERT KNIVES	SS 409	-
28	ANCHOR PLATE	M.S. IS:2062	4NOS.
27	FOUNDATION STUDS & NUTS	En8 OR EQUIV.	4EACH
26	TOP & DISCHARGE SCRAPERS	CAST IRON	1EACH
25	ECCENTRIC SHAFT	FORGED STEEL IS:1570	2NOS.
24	TRASH BEAM BRACKET	CAST STEEL IS:1030 Gr. 280/520w.	2NOS.
23	TRASH BEAM	CAST STEEL IS:1030 Gr. 280/520w.	1NO.
22	TRASH PLATE (70MM THK.)	CAST STEEL IS:1030 Gr. 280/520w.	1NO.
21	DRAW BOLT	FORGED STEEL IS:1570	4NOS.
20	WEDGE	CAST STEEL IS:1030, Gr. 28/52	4NOS.
19	MILL CROWN PINION	CAST STEEL IS:2708, Gr. III	3NOS.
18	BEECH BLOCK	CAST STEEL IS:1030, Gr. 28/52	2NOS.
17	LINER	SMILESS TUBE	2NOS.
16	HYDRAULIC RAM	FORGED STEEL 40C8, IS:1570.	2NOS.
15	BALL	En24 OR EQUIV.	2NOS.
14	BALL INSERT	CAST STEEL IS:1030, Gr. 28/52	4NOS.
13	PRESSURE PLATE	CAST STEEL IS:1030, Gr. 28/52	2NOS.
12	WEAR PLATE	GUN METAL OR POLYMER LINER	2NOS.
11	BEARING HOUSING FOR BOTTOM ROLLERS	CAST STEEL IS:1030 Gr. 28/52.	4NOS.
10	BEARING HOUSING FOR TOP ROLLER TOP HALF	CAST STEEL IS:1030 Gr.28/52	2NOS.
09	BEARING HOUSING FOR TOP ROLLER BOTTOM HALF	GUN METAL IS:318	2NOS.
08	U.F.R. SHELL	CAST IRON IS:11202-1985, 180-210BHN, WITH CARBON-3.2 TO 3.6%, MANGANESE-2.2TO3.2% SILICON-1.2TO2.2%, PHOSPHOURS-0.5%MAX., SULPHUR- 0.15%MAX.	1NO.
07	U.F.R. SHAFT	FORGED STEEL 40C8 IS:1570	1NO.
06	MILL ROLLER SHELL	CAST IRON IS:11202-1985, 180-210BHN, WITH CARBON-3.2 TO 3.6%, MANGANESE-2.2TO3.2% SILICON-1.2TO2.2%, PHOSPHOURS-0.5%MAX., SULPHUR- 0.15%MAX.	3NOS.
05	MILL ROLLER SHAFT	FORGED STEEL 45C8 IS:1570 SIS8KG/MM2	3NOS.
04	PN FOR CAPS	En8 OR EQUILENT.	12NOS.
03	SIDE CAP	CAST STEEL IS:1030 Gr.280/520w.	4NOS.
02	TOP CAP	CAST STEEL IS:1030 Gr.280/520w.	2NOS.
01	HEAD STOCK	CAST STEEL IS:1030 Gr.280/520w.	2NOS.
S.No.	DESCRIPTION	MATERIAL QUALITY	QTY.
MATERIAL QUALITY FOR CASTING PARTS.			

REV. NO.	DESCRIPTION	DRN. BY	CHD. BY	DATE

REVISION

CLIENT: <b>SITSON INDIA PVT. LTD.</b>	
NAME	DATE
SCALE	
ASSEMBLY OF #33"x66" MILL	

**AMEY ENGINEERS**  
2-45, ANANDRAO BAVASAHEB, CHAVAN, PUNE-411004, INDIA  
PH: 020-26090001, 020-26090002, 020-26090003  
WWW.AMEYENGINEERS.COM